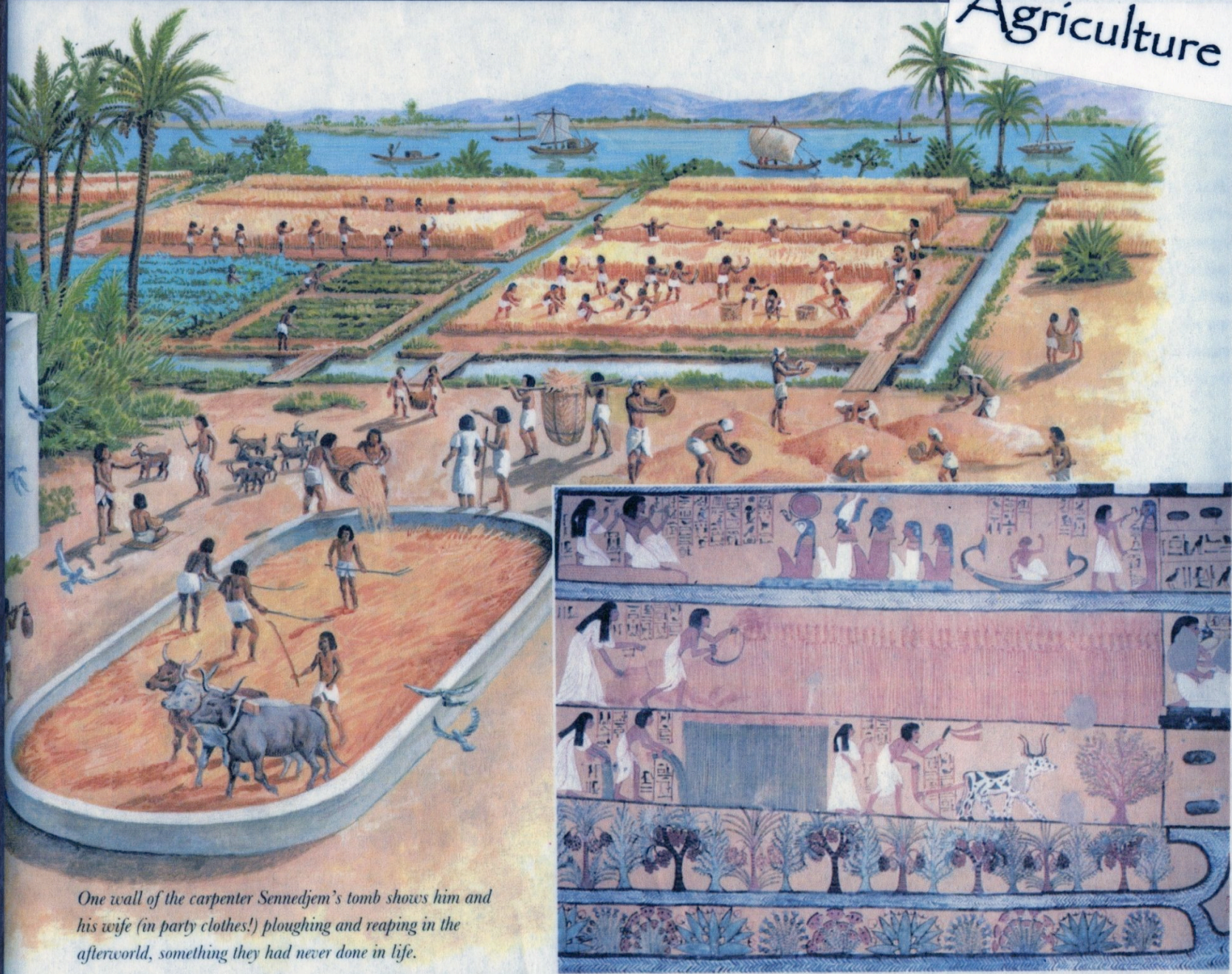
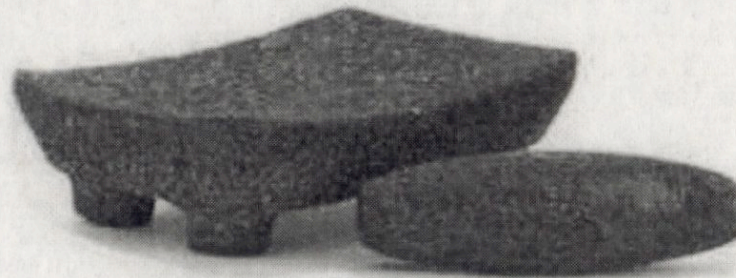


Agriculture



One wall of the carpenter Sennedjem's tomb shows him and his wife (in party clothes!) ploughing and reaping in the afterworld, something they had never done in life.

This statuette shows a woman grinding grain into flour using a grindstone on an oval slab. It is from the Pyramid district of Giza, 6th Dynasty, c. 2200 B. C.



similar "mortar and pestle"

Farming in Egypt



Farmers in ancient Egypt learned how to grow wheat and barley. This tomb painting shows a couple harvesting their crop (left). Farmers in Egypt still use the fertile lands along the Nile River to grow food (above).